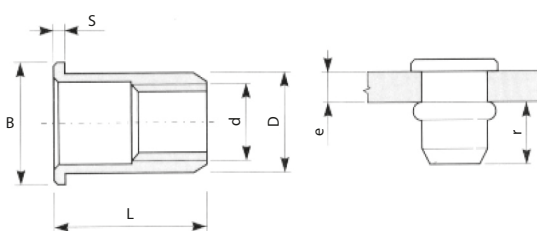


Art. 940

INSERTI FILETTATI INOX A TESTA CILINDRICA

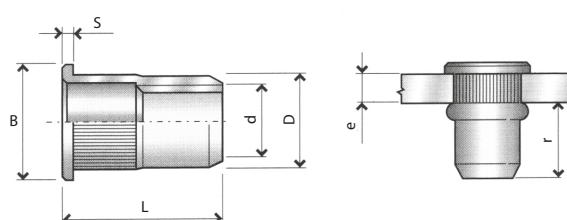


Articolo	TIPO	e	r Min --- Max	θ	D 0 -0,1	B 0 -0,4	S	L
940A*	M3 FTT/C	0.3-:-1						8.5
940B*	M3 FTT/M	1.0-:-2	5.5 -:- 5.8	5	4.9	6	0.8	9.5
940C*	M3 FTT/L	2.0-:-3						10.5
940D	M4 FTT/C	0.3-:-2.5	5.5 -:- 6	6	5.9	9	1	11
940F	M4 FTT/L	2.5-:-4.0						13
940G	M5 FTT/C	0.5-:-3.0	7.2 -:- 7.7	7	6.9	10	1.2	13
940K	M5 FTT/L	3.0-:-5.0						15.5
940L	M6 FTT/C	0.5-:-3.0	7.6 -:- 8.2	9	8.9	12	1.5	14.5
940N	M6 FTT/L	3.0-:-5.5						17.5
940P	M8 FTT/C	0.8-:-3.5	9.5-:-10.1	11	10.9	15	1.5	17.5
940R	M8 FTT/L	3.5-:-6.0						20
940S	M10 FTT/C	1.5-:-3.5	13-:-14	13	12.9	17	1.7	21
940U	M10 FTT/L	3.5-:-6.0						24

* fusto esterno liscio

Art. 940

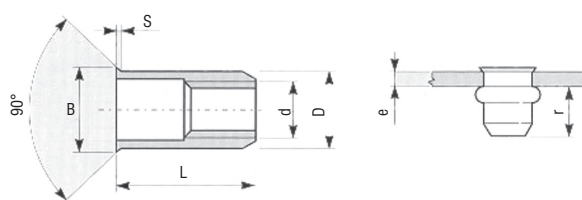
INSERTI FILETTATI INOX A TESTA CILINDRICA



Articolo	TIPO	d	e	r Min --- Max	θ	D	B	S	L
940GA4	M5 FTT/C	M5	0.5-:-3.0	7.2-:-7.7	7	6.9	10	1.2	13
940LA4	M6 FTT/C	M6	0.5-:-3.0	7.6-:-8.2	9	8.9	12	1.5	14.5
940PA4	M8 FTT/C	M8	0.8-:-3.5	9.5-:-10.1	11	10.9	15	1.5	17.5

Art. 942

INSERTI FILETTATI INOX A TESTA RIDOTTA

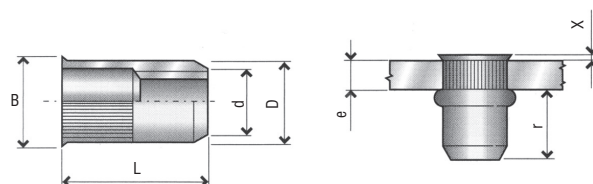


Articolo	TIPO	d 6 H	e	r Min --- Max	\varnothing	D 0 -0,1	B -0,1 +0,3	S	L
942AA *	M 3 FTR	M 3	0.5-:-1.5	4.2-:-4.6	5	4.9	5.5	0.3	8.5
942A	M 4 FTR	M 4	0.5-:-1.5	6.5-:-7.0	6	5.9	6.75	0.4	10
942B	M 5 FTR	M 5	0.5-:-2.0	8.0-:-8.5	7	6,9	8	0.4	12
942C	M 6 FTR	M 6	0.5-:-2.0	9.0-:-9.7	9	8,9	10	0.5	13.5
942D	M 8 FTR	M 8	1.0-:-2.5	10.7-:-11.4	11	10.9	12	0.5	16.5
942E	M 10 FTR	M 10	1.0-:-3.5	12.8-:-13.3	13	12.9	14.5	0.8	20

* fusto esterno liscio

Art. 942

INSERTI FILETTATI INOX A TESTA RIDOTTA

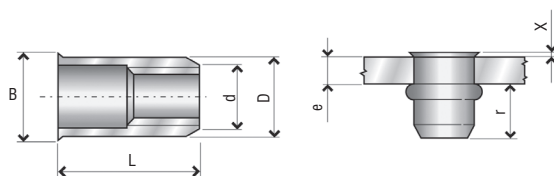


Articolo	TIPO	d	e	r Min --- Max	\varnothing	D	B	X	L
942BA4	M5 FTR	M5	0.5-:-2.0	8.0-:-8.5	7	6.9	8	0.4	12
942CA4	M6 FTR	M6	0.5-:-2.0	9.0-:-9.7	9	8.9	10	0.5	13.5
942DA4	M8 FTR	M8	1.0-:-2.5	10.7-:-11.4	11	10.9	12	0.5	16.5

Art. 942

INSERTI FILETTATI INOX A TESTA RIDOTTA

AISI 304



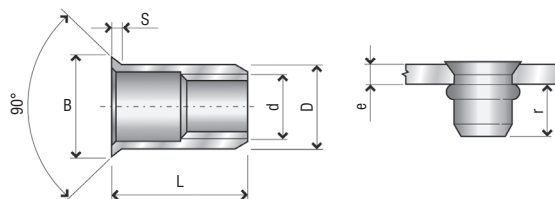
Articolo	TIPO	d	e	r Min --- Max	ϕ	D	B	X	L
942APR	M4 PR	M4	0.5-:-1.5	6.3-:-6.7	6.4	6.3	6.9	0.4	10.5
942BPR	M5 PR	M5	0.5-:-2.0	7.4-:-7.8	7.2	7.1	7.7	0.4	12
942CPR	M6 PR	M6	0.7-:-2.5	8.8-:-9.6	9.6	9.5	10.2	0.5	14
942DPR	M8 PR	M8	1.0-:-3.0	10.0-:-10.8	10.6	10.5	11.3	0.5	16

N.B.: DIFFERISCONO DAL MODELLO FTR NELLA DIMENSIONE DEL DIAMETRO ESTERNO.

Art. 944

INSERTI FILETTATI INOX A TESTA SVASATA

AISI 304

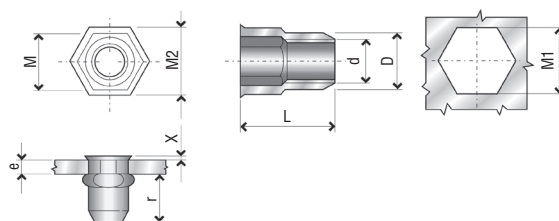


Articolo	TIPO	d 6 H	e	r Min --- Max	ϕ	D 0 -0,1	B 0 -1	S	L
944A	M 4 FTS/C	M 4	1.5-:-3.5	5.8-:-6.3	6	5.9	9	1.5	11
944C	M 4 FTS/L	M 4	3.5-:-5.0	5.8-:-6.3	6	5.9	9	1.5	13
944D	M 5 FTS/C	M 5	1.5-:-3.8	6.8-:-7.3	7	6.9	10	1.5	13
944F	M 5 FTS/L	M 5	3.8-:-6.0	6.8-:-7.3	7	6.9	10	1.5	15
944G	M 6 FTS/C	M 6	1.5-:-3.8	8.5-:-9.2	9	8.9	12	1.5	15
944K	M 6 FTS/L	M 6	3.8-:-6	8.5-:-9.2	9	8.9	12	1.5	17
944L	M 8 FTS/C	M 8	1.5-:-3.8	9.5-:-10.4	11	10.9	14	1.5	16,5
944N	M 8 FTS/L	M 8	3.8-:-6.0	9.5-:-10.4	11	10.9	14	1.5	19
944P	M10 FTS/C	M 10	1.5-:-3.5	11.6-:-12.2	12	11.9	15	1.5	18
944R	M10 FTS/L	M 10	3.5-:-6.0	11.6-:-12.2	12	11.9	15	1.5	21

INSERTI INOX

Art. 946

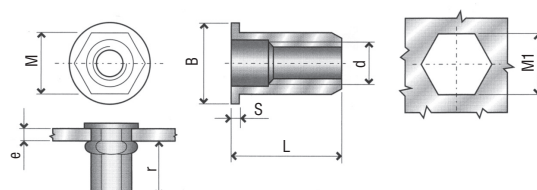
INSERTI FILETTATI INOX A TESTA RIDOTTA
E GAMBO PARZIALMENTE ESAGONALE



Articolo	TIPO	d	e	r Min --- Max	M1	M	M2	X	D	L
946B	M4 IE	M4	0.5-:-2.0	6.5-:-6.8	6	5.9	6.8	0.4	5.9	10.6
946C	M5 IE	M5	0.5-:-3.0	6.8-:-7.2	7	6.9	7.9	0.4	6.9	11.6
946D	M6 IE	M6	0.5-:-3.0	9.4-:-9.6	9	8.9	10.1	0.5	8.9	14.5
946E	M8 IE	M8	0.8-:-3.0	9.5-:-10	11	10.9	12	0.5	10.9	15.8

Art. 948

INSERTI FILETTATI INOX A TESTA CILINDRICA
E GAMBO ESAGONALE



Articolo	TIPO	d	e	r Min --- Max	M1	M	B	S	L
948B	M4 FTTE	M4	0.5-:-2.0	6.0-:-6.5	6	5.9	9	1	11
948C	M5 FTTE	M5	0.5-:-3.0	7.2-:-7.7	7	6.9	10	1	14
948D	M6 FTTE	M6	0.5-:-3.0	9.3-:-9.7	9	8.9	13	1.5	16
948E	M8 FTTE	M8	0.5-:-3.0	11.6-:-12.2	11	10.9	16	1.5	18