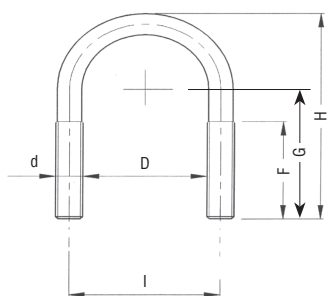


Art. 935

CAVALLOTTI INOX LEGGERI AISI 304



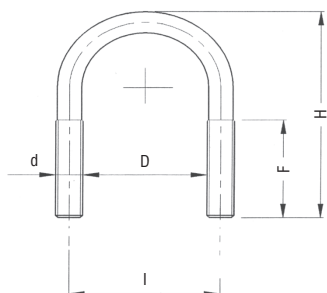
Articolo	TUBO	D	d	L	F	G	H	I	Sm.	PESO gr
935A	1/8	11	M6	72	16	23	34	17	12	11,9
935B	1/4	14	M6	79	16	24	37	20	12	13,0
935C	3/8	18	M6	88	16	26	41	24	12	14,5
935D	1/2	22	M6	99	18	28	45	28	12	16,3
935E	3/4	27	M6	114	18	31	50	33	12	18,8
935F	1"	34	M6	130	18	34	57	40	12	21,5
935G	1" 1/4	43	M6	155	18	39	66	49	12	25,6
935H	1" 1/2	49	M8	178	28	45	77	57	14	55,2
935L	2"	61	M8	210	28	51	89	69	14	65,1
935M	2" 1/2	77	M8	251	28	59	105	85	14	77,8
935N	3"	89	M8	282	28	65	117	97	14	87,4
935P	3" 1/2	102	M8	323	35	75	134	110	17	100,1
935Q	4"	115	M8	355	35	81	146	123	17	110,1
935R	5"	140	M8	420	35	94	172	148	17	130,2
935S	6"	168	M10	503	45	112	205	178	20	246,5
935T	8"	220	M10	637	45	138	257	230	20	312,1
935U	10"	274	M10	776	45	165	311	284	20	380,2

DADI E RONDELLE A RICHIESTA

L = sviluppo lineare del cavallotto (mm)

Art. 935

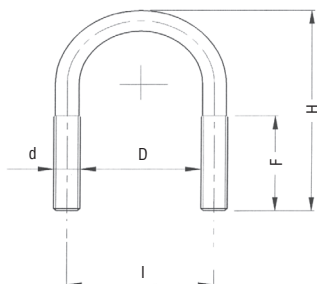
CAVALLOTTI INOX PESANTI AISI 304



Articolo	TUBO	D	d	L	F	H	I	PESO gr
935DP	1/2"	22	M8	99	25	55	30	10.3
935EP	3/4	27	M8	114	25	59	35	11.0
935FP	1"	34	M8	130	25	67	42	12.2
935GP	1" 1/4	43	M8	155	25	75	51	13.6
935HP	1" 1/2	49	M10	178	36	87	59	12.8
935LP	2"	61	M10	210	36	99	71	14.2
935MP	2" 1/2	77	M10	251	36	115	87	16.4
935NP	3"	89	M10	282	36	127	99	17.9
935PP	3" 1/2	102	M12	323	45	148	114	14.8
935QP	4"	115	M12	355	45	162	127	16.0
935RP	5"	140	M12	420	45	186	152	18.3

DADI E RONDELLE A RICHIESTA

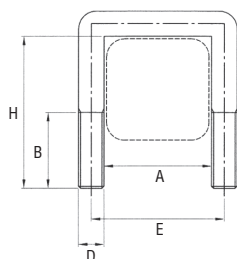
L = sviluppo lineare del cavallotto (mm)

Art. 935
CAVALLOTTI INOX PESANTI AISI 316


Articolo	TUBO	D	d	L	F	H	I	PESO gr
935DA4	1/2"	22	M8	99	25	55	30	10.3
935EA4	3/4	27	M8	114	25	59	35	11.0
935FA4	1"	34	M8	130	25	67	42	12.2
935GA4	1" 1/4	43	M8	155	25	75	51	13.6
935HA4	1" 1/2	49	M10	178	36	87	59	12.8
935LA4	2"	61	M10	210	36	99	71	14.2
935MA4	2" 1/2	77	M10	251	36	115	87	16.4
935NA4	3"	89	M10	282	36	127	99	17.9

DADI E RONDELLE A RICHIESTA

L = sviluppo lineare del cavallotto (mm)

CAVALLOTTI INOX
Art. 937
CAVALLOTTI QUADRI AISI 316


Articolo	A (mm)	D (mm)	H (mm)	E (mm)	B (mm)	PESO (gr/cad)
937C	42	10	60	52	30	86
937D	52	10	70	62	30	101
937E	62	10	85	72	30	121
937F	72	12	95	84	30	197
937G	82	12	105	94	30	219
937H	92	12	115	104	30	240
937I	102	12	125	114	30	262
937J	122	12	145	134	30	305
937K	142	16	175	158	45	660
937L	162	16	195	178	45	738
937M	182	16	215	198	45	816
937N	202	16	235	218	45	894