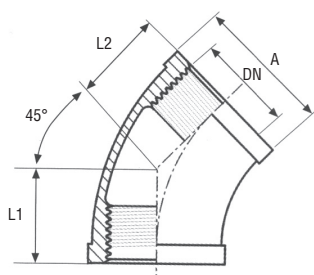
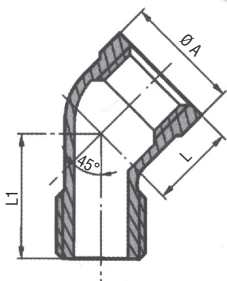
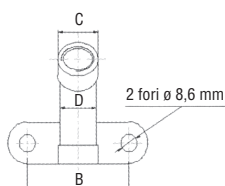
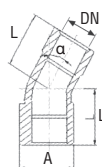


Art. 1205
GOMITO 45° FF


Articolo	Misura in pollici	DN	A mm	L1-L2 mm	PESO g/cad
1205A	1/8"	6	18	18	36
1205B	1/4"	8	21	17	50
1205C	3/8"	10	25	20	87
1205D	1/2"	15	29.5	22	118
1205E	3/4"	20	35.6	25	147
1205F	1"	25	43	28	246
1205G	1 1/4"	32	52.4	33	347
1205H	1 1/2"	40	58	36	416
1205L	2"	50	72	43	673
1205M	2 1/2"	65	87	49	918
1205N	3"	80	100	55	1154
1205P	4"	100	125.5	64	1993

Art. 1207
GOMITO 45° MF


Articolo	Misura in pollici	A mm	L mm	L1 mm	PESO g/cad
1207A	1/8"	17	16	21	24
1207B	1/4"	21	17	23	42
1207C	3/8"	25	19	27	63
1207D	1/2"	29	21	31	87
1207E	3/4"	35	25	36	135
1207F	1"	43	29	42	230
1207G	1 1/4"	52	34	49	360
1207H	1 1/2"	58	37	51	422
1207L	2"	71	42	59	710
1207M	2 1/2"	88	49	71	1210
1207N	3"	101	54	79	1670
1207P	4"	129	65	96	2860

Art. 1208
GOMITO FF CON FLANGIA


Articolo	Misura in pollici	DN	gradi	L mm	A mm	B mm	C mm	D mm	PESO g/cad
1208D45	1/2"	15	45°	22.8	28.5	55	27	25	146
1208D90	1/2"	15	90°	27.7	28.5	55	27	25	162

I VALORI EVIDENZIATI IN TABELLA DIFFERISCONO DALL'IMMAGINE ILLUSTRATIVA