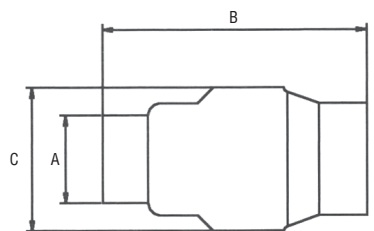




AISI 304



Articolo	DN	DN inch	A mm	B mm	C mm	PESO g/cad
1202A	8	1/4"	18	55	32	94
1202B	10	3/8"	20	55	32	91
1202C	15	1/2"	25	55	32	93
1202D	20	3/4"	29	70	44	129
1202E	25	1"	36	84	53	191
1202F	32	1"1/4	45	99	62	281
1202G	40	1"1/2	51	119	78	388
1202H	50	2"	64	123	89	704
1202L	65	2"1/2	80	147	113	1425
1202M	80	3"	93	166	132	2085
1202N	100	4"	120	193	167	3415



Valvola di ritegno in acciaio inox tornito (Dim. 1/4" - 3/8" - 1/2")
 Valvola di ritegno in acciaio inox stampata (Dim. 3/4" - 1" - 1" 1/4 - 1" 1/2 - 2" - 2" 1/2 - 3" - 4")

- Corpo e parti metalliche in acciaio inossidabile AISI 304
- Tenuta: FPM
- Connessioni filettate femmina: ISO 228/1 (ex DIN 259) femmina cilindrica
- Pressione di apertura max: 0,03 bar
- Pressione di lavoro: 16 bar
- Temperatura di esercizio: -20°C ÷ +150°C

DIAGRAMMA PRESSIONE-TEMPERATURA (1/4" ÷ 1/2")

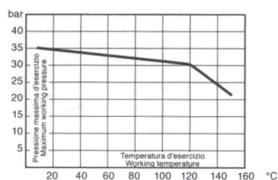
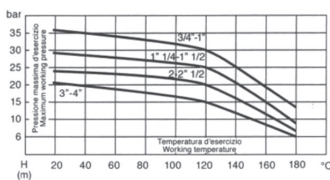
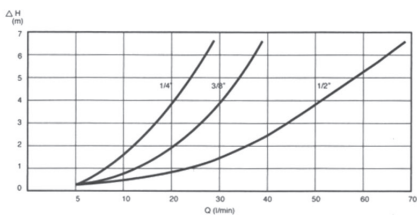


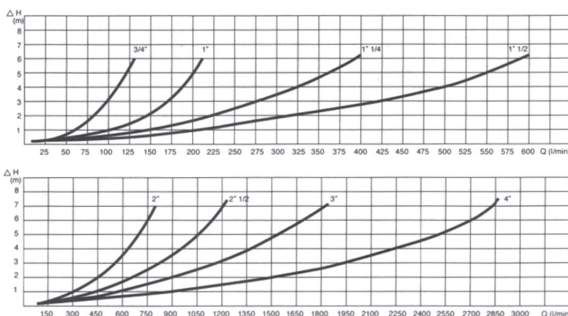
DIAGRAMMA PRESSIONE-TEMPERATURA (3/4" ÷ 4")



DIAGRAMMI PERDITE DI CARICO (1/4" ÷ 1/2")



DIAGRAMMI PERDITE DI CARICO (3/4" ÷ 4")



VALVOLE INOX