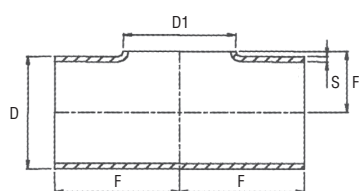


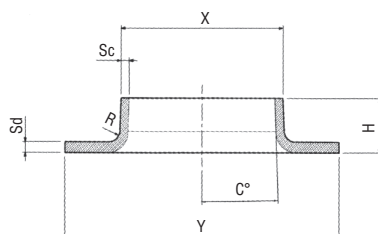
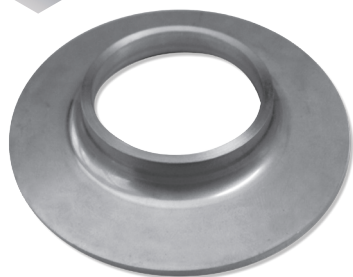
Art. 1362
TEE E.U. RIBASSATI DIN 2605

RACCORDI INOX A SALDARE

AISI 304


Articolo	DN	D-D1 mm	S mm	F mm	F1 mm	PESO g/cad
1362C	15 (1/2")	21.3	2	25	12	66
1362D	20 (3/4")	26.9	2	28	15	90
1362E	25 (1")	33.7	2	38	19	146
1362F	32 (1"1/4)	42.4	2	47	23	230
1362G	40 (1"1/2)	48.3	2	57	26	330
1362H	50 (2")	60.3	2	63	33	420
1362L	65 (2"1/2)	76.1	2	76	42	850
1362M	80 (3")	88.9	2	85	48	1050
1362N	100 (4")	114.3	2	105	62	1314

FORNIBILI ANCHE IN AISI 316
Art. 1370
CARTELLE DI APPOGGIO

AISI 304


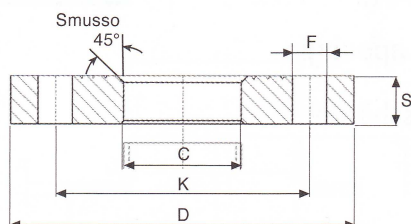
Articolo	DN	DN inch	Y mm	X mm	H mm	Sd mm	Sc mm	PESO g/cad
1370B	10	3/8"	40	17.2	6	2	2	20
1370C	15	1/2"	43	21.3	7	2	2	25
1370D	20	3/4"	58	26.9	8	2	2	38
1370E	25	1"	68	33.7	9	2	2	55
1370F	32	1"1/4	78	42.4	10	2	2	68
1370G	40	1"1/2	88	48.3	10	2	2	85
1370H	50	2"	102	60.3	12	2	2	115
1370L	65	2"1/2	122	76.1	12	2	2	150
1370M	80	3"	138	88.9	12	2	2	170
1370N	100	4"	158	114.3	16	2	2	200
1370P	125	5"	185	139.7	16	2	2	300
1370Q	150	6"	212	168.3	17	2	2	350
1370R	200	8"	270	219.1	18	2	2	500

FORNIBILI ANCHE IN AISI 316

FLANGIA PIANA IN ALLUMINIO

ART. FLDN

NOVITÀ



Flangia in alluminio

Norma: UNI 6089 - DIN 2642 ISO R64
Materiale: lega di alluminio
EN AB 47000 (UNI 7369/2)

PN 10

Articolo	DN	DN inch	Tubo	FLANGIA			FORI			PESO Kg/cad.
			DE mm	D mm	S mm	C mm	K mm	F mm	N. fori	
FLDN10PN10ALL	10	3/8"	17.2	90	12	19	60	14	4	0.18
FLDN15PN10ALL	15	1/2"	21.3	95	12	24	65	14	4	0.19
FLDN20PN10ALL	20	3/4"	26.9	105	12	30	75	14	4	0.22
FLDN25PN10ALL	25	1"	33.7	115	12	36	85	14	4	0.27
FLDN32PN10ALL	32	1"1/4	42.4	140	16	46	100	18	4	0.53
FLDN40PN10ALL	40	1"1/2	48.3	150	16	54	110	18	4	0.59
FLDN50PN10ALL	50	2"	60.3	165	16	65	125	18	4	0.7
FLDN65PN10ALL	65	2"1/2	76.1	185	16	81	145	18	4	0.87
FLDN80PN10ALL	80	3"	88.9	200	18	94	160	18	8	1.05
FLDN100PN10ALL	100	4"	114.3	220	18	119	180	18	8	1.16
FLDN125PN10ALL	125	5"	139.7	250	18	144	210	18	8	1.45
FLDN150PN10ALL	150	6"	168.3	285	18	173	240	22	8	1.7
FLDN200PN10ALL	200	8"	219.1	340	20	225	295	22	8	2.5
FLDN250PN10ALL	250	10"	273	395	22	279	350	22	12	3.25
FLDN300PN10ALL	300	12"	323.9	445	22	329	400	22	12	3.8

FLANGIA PIANA IN ACCIAIO INOX 304L/316L - PN10

ART. FLDN



NOVITÀ

Acciaio inox AISI	Codice Articolo	PN	Tubo		FLANGIA					BULLONI		PESO Kg/cad.
			DN	A	B1	D	C1	K	L	N. fori	Fil.	
304L	FLDN15PN10A2	PN10 = 16 = 25 = 40	15 - 1/2"	21.3	22	95	14	65	14	4	M12	0.7
316L	FLDN15PN10A4											
304L	FLDN20PN10A2		20 - 3/4"	26.9	27.5	105	16	75	14	4	M12	1
316L	FLDN20PN10A4											
304L	FLDN25PN10A2		25 - 1"	33.7	34.5	115	16	85	14	4	M12	1.1
316L	FLDN25PN10A4											
304L	FLDN32PN10A2		32 - 1"1/4	42.4	43.5	140	18	100	18	4	M16	1.8
316L	FLDN32PN10A4											
304L	FLDN40PN10A2		40 - 1"1/2	48.3	49.5	150	18	110	18	4	M16	2.1
316L	FLDN40PN10A4											
304L	FLDN50PN10A2	PN10 = 16	50 - 2"	60.3	61.5	165	20	125	18	4	M16	2.6
316L	FLDN50PN10A4											
304L	FLDN65PN10A2		65 - 2"1/2	76.1	77.5	185	20	145	18	8	M16	3.3
316L	FLDN65PN10A4											
304L	FLDN80PN10A2		80 - 3"	88.9	90.5	200	20	160	18	8	M16	3.6
316L	FLDN80PN10A4											
304L	FLDN100PN10A2		100 - 4"	114.3	116	220	22	180	18	8	M16	4.4
316L	FLDN100PN10A4											
304L	FLDN125PN10A2		125 - 5"	139.7	141.5	250	22	210	18	8	M16	5.4
316L	FLDN125PN10A4											
304L	FLDN150PN10A2	150 - 6"	168.3	170.5	285	24	240	22	8	M20	7.2	
316L	FLDN150PN10A4											
304L	FLDN200PN10A2	PN10	200 - 8"	219.1	221.5	340	24	295	22	8	M20	9.3
316L	FLDN200PN10A4											
304L	FLDN250PN10A2		250 - 10"	273	276.5	395	26	350	22	12	M20	12
316L	FLDN250PN10A4											
304L	FLDN300PN10A2		300 - 12"	323.9	327.5	445	26	400	22	12	M20	13.8
316L	FLDN300PN10A4											
304L	FLDN350PN10A2		350 - 14"	355.6	359.5	505	28	460	22	16	M20	20.6
316L	FLDN350PN10A4											
304L	FLDN400PN10A2		400 - 16"	406.4	411	565	32	515	26	16	M24	28
316L	FLDN400PN10A4											
304L	FLDN500PN10A2	500 - 20"	508	513.5	670	38	620	26	20	M24	41	
316L	FLDN500PN10A4											

FLANGIA PIANA IN ACCIAIO INOX 304L/316L - PN16

ART. FLDN



Acciaio inox AISI	Codice Articolo	PN	Tubo		FLANGIA					BULLONI		PESO Kg/cad.
			DN	A	B1	D	C1	K	L	N. fori	Fil.	
304L	FLDN15PN16A2	PN10 = 16 = 25 = 40	15 - 1/2"	21.3	22	95	14	65	14	4	M12	0.7
316L	FLDN15PN16A4											
304L	FLDN20PN16A2		20 - 3/4"	26.9	27.5	105	16	75	14	4	M12	1
316L	FLDN20PN16A4											
304L	FLDN25PN16A2		25 - 1"	33.7	34.5	115	16	85	14	4	M12	1.1
316L	FLDN25PN16A4											
304L	FLDN32PN16A2		32 - 1"1/4	42.4	43.5	140	18	100	18	4	M16	1.8
316L	FLDN32PN16A4											
304L	FLDN40PN16A2	40 - 1"1/2	48.3	49.5	150	18	110	18	4	M16	2.1	
316L	FLDN40PN16A4											
304L	FLDN50PN16A2	PN10 = 16	50 - 2"	60.3	61.5	165	20	125	18	4	M16	2.6
316L	FLDN50PN16A4											
304L	FLDN65PN16A2		65 - 2"1/2	76.1	77.5	185	20	145	18	8	M16	3.3
316L	FLDN65PN16A4											
304L	FLDN80PN16A2		80 - 3"	88.9	90.5	200	20	160	18	8	M16	3.6
316L	FLDN80PN16A4											
304L	FLDN100PN16A2		100 - 4"	114.3	116	220	22	180	18	8	M16	4.4
316L	FLDN100PN16A4											
304L	FLDN125PN16A2	125 - 5"	139.7	141.5	250	22	210	18	8	M16	5.4	
316L	FLDN125PN16A4											
304L	FLDN150PN16A2	150 - 6"	168.3	170.5	285	24	240	22	8	M20	7.2	
316L	FLDN150PN16A4											
304L	FLDN200PN16A2	PN16	200 - 8"	219.1	221.5	340	26	295	22	12	M20	9.8
316L	FLDN200PN16A4											
304L	FLDN250PN16A2		250 - 10"	273	276.5	405	29	355	26	12	M24	14.5
316L	FLDN250PN16A4											
304L	FLDN300PN16A2		300 - 12"	323.9	327.5	460	32	410	26	12	M24	19.3
316L	FLDN300PN16A4											
304L	FLDN350PN16A2		350 - 14"	355.6	359.5	520	35	470	26	16	M24	28.5
316L	FLDN350PN16A4											
304L	FLDN400PN16A2	400 - 16"	406.4	411	580	38	525	30	16	M27	36.2	
316L	FLDN400PN16A4											
304L	FLDN500PN16A2	500 - 20"	508	513.5	715	46	650	33	20	M30	64	
316L	FLDN500PN16A4											