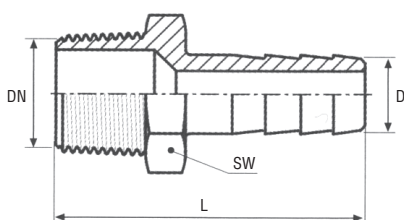


Art. 1330

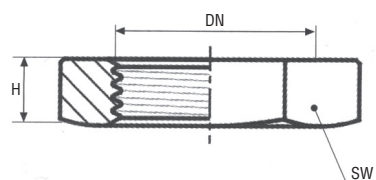
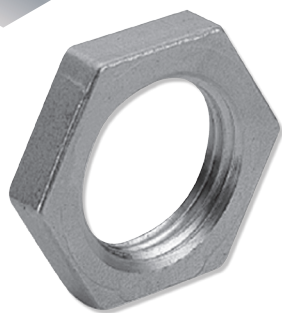
PORTAGOMMA



Articolo	DN	DN inch	D mm	L mm	SW mm	PESO g/cad
1330A	6	1/8"	7	45	12.5	15
1330B	8	1/4"	9	47	16.5	31
1330C	10	3/8"	11	55	20	41
1330D	15	1/2"	13	64	23.5	71
1330E	20	3/4"	16	68	31	118
1330F	25	1"	25	71	38.5	235
1330G	32	1"1/4	33	80	46	267
1330H	40	1"1/2	39	95	52	428
1330L	50	2"	51	105	62	666

Art. 1335

CONTRODADO



Articolo	DN	DN inch	H mm	SW mm	PESO g/cad
1335A	6	1/8"	6.2	14	3
1335B	8	1/4"	7	23	19
1335C	10	3/8"	8	26	22
1335D	15	1/2"	10	31	39
1335E	20	3/4"	11	37	56
1335F	25	1"	10	46	79
1335G	32	1"1/4	11	55	110
1335H	40	1"1/2	12	63	154
1335L	50	2"	13	76	227
1335M	65	2"1/2	16	95	450
1335N	80	3"	19	105	575
1335P	100	4"	20	131	775